

“ . . . I saved one animal and it didn't change the world , but surely the world changed for that one animal . . . ”



# PLACING PAWS

“in the hearts of their Forever Homes”

[www.PlacingPawsRescue.org](http://www.PlacingPawsRescue.org)  
[PlacingPaws@Yahoo.com](mailto:PlacingPaws@Yahoo.com)  
PO Box 121  
Libertyville, IL 60048-0121

As 2011 comes to an end, we look back on a difficult year for Placing Paws. The struggling economy and natural disasters have left rescues like ours with even more animals needing our help. As a rescue, the need for Placing Paws is always larger than the resources available to us. The adoption fees we receive cover approximately 60% of the cost of veterinary care, food, medical supplies and transportation for our fosters. We rely on support from generous donors to cover our remaining expenses. Unlike other rescue groups, we do not turn down animals with special medical needs. The following heartwarming stories illustrate some of the successes we have had with our “special needs” animals. Your continued support makes these happy endings possible.

## Ruby . . .

Early in the summer of 2011, Montgomery County Animal The neglected dogs came from the from one momma dog: Ruby. In of dogs is challenging and the of July 2011, Placing Paws was able and begin helping her on her road to was the victim of a heartworm infection, and skin cancer. She has recovered from two chest. Ruby spent the beginning of her time with Placing Paws being fostered at Care Animal Hospital in Libertyville where she quickly became a favorite and resident mascot. When she was healthy enough, Ruby was moved into a wonderful and loving foster home. She is adored by all and greets everyone with wags and kisses. Ruby has touched the hearts of many along the way. You can't help but to smile when you see her joyfully bouncing after a toy or ball. Ruby is a feel good kind of dog and like all Placing Paws rescues, she deserves a wonderful happy ending. In late November, Ruby's cancer returned and she continues treatment under the care of her loving foster family and Placing Paws. You can follow Ruby's blog at <http://therevolvingdoggiedoor.wordpress.com/>



## And her circle of life

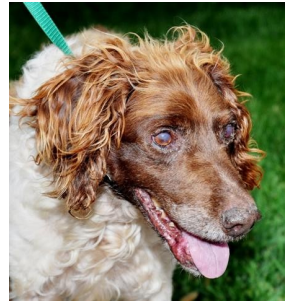
Placing Paws began working with Control to rescue a family of 16 labs. same property and all descended many cases, rescuing an entire family momma dog is left behind. At the end to save Ruby from her abusive family recovery. Because of her neglect, Ruby reoccurring skin infections, skin growths, surgeries to remove a mass from her



## Buddy



Buddy came to Placing Paws in desperate need of rescue. The senior English Springer Spaniel wandered out of the woods and into someone's backyard on a 97 degree day. At first glance, Buddy looked like an older dog that needed a haircut and a bath. Underneath his matted coat, we found an emaciated dog in need of immediate care. He was covered in ticks and had a double eye infection. Sweet, gentle Buddy was treated for Lyme's disease and Ehrlichia and needed surgical care to remove a tumor from his face.



**Buddy found his forever family in July. He is having the life he waited far too long to enjoy.**

Sandy, a beautiful orange tabby who Placing Paws rescued at 10 weeks old, suffered a severe eye infection in both eyes. He was treated at Eye Care for Animals specialty clinic in Wheeling. He required approximately 3 months of eye medication and re-checks at the clinic.

## Sandy



**Sandy was adopted by his foster mom who absolutely adores him and can't imagine life without him.**



## Jesse

Jesse is an adorable female black lab that was found along with her brothers in a school yard on a rainy day in Southeast Missouri when they were only 5 months old. Jesse was found with an injured leg which we tried to save through surgery. Unfortunately, the damage was too extensive and her leg had to be amputated. Jesse's surgery was done at Grayslake Animal Emergency and Treatment Center.

**Jesse was later adopted by one of the Veterinarians at AETC and has a new lease on life and loves every minute of it!**

**These are only a few of the many success stories of the animals rescued by Placing Paws during the past year. In 2011 we placed over 175 animals into permanent loving homes. This would never have been possible without support from families like yours and the help of our wonderful volunteers.**

Many of you receiving this letter have adopted from Placing Paws. We hope you consider a holiday donation in honor of your rescued pet or one that has crossed the Rainbow Bridge, such as Frankie, a Placing Paws sanctuary dog. It is truly the gift of a second lease on life for the deserving animals that find their way into our hearts every day. Please check with your employers as many companies offer matching grants. We thank you sincerely for your generosity.

*All of us at Placing Paws wish you peace in this holiday season.*

*Becky, Cindy, Christie and Jeanne*

**Placing Paws is an approved 501(c)3 and we rely completely on donations**

***We look forward to continued success in 2012 with your support.  
For your convenience a pre addressed envelope has been enclosed.  
You may also go to [www.PlacingPawsRescue.org](http://www.PlacingPawsRescue.org)***

***We are asking for your help so that we can continue our mission.  
By making a donation to Placing Paws you will help save a life.  
Please consider making a tax deductible donation today.***



*In loving memory of Frankie  
and all of those who have  
crossed over the rainbow bridge.  
Frankie was an adored sanctuary dog  
that crossed over this past year.*

***“ . . . I saved one animal and it didn't change the world , but surely the world changed for that one animal . . . ”***